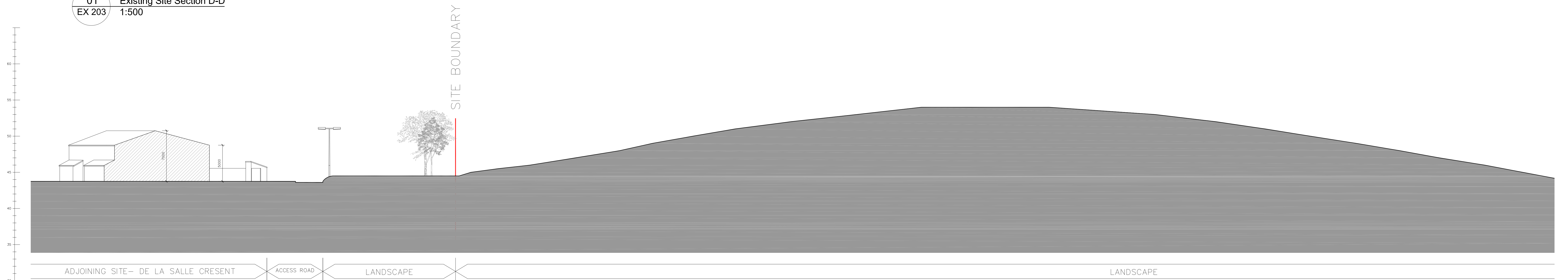
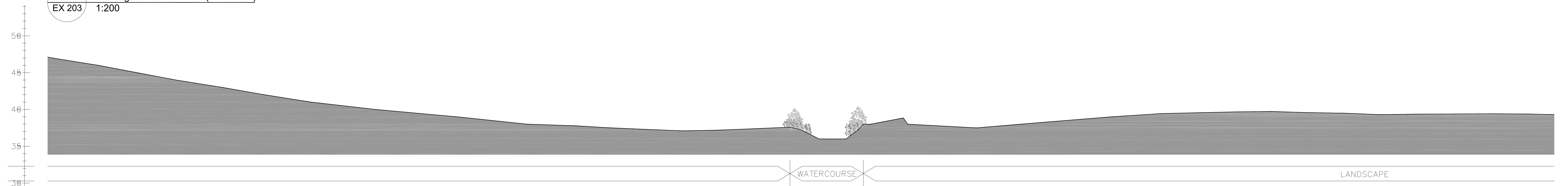


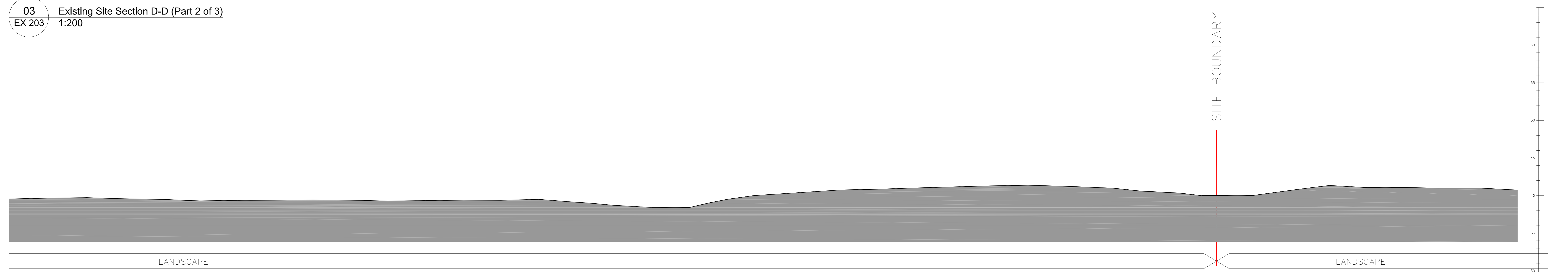
01 Existing Site Section D-D  
EX 203 1:500



02 Existing Site Section D-D (Part 1 of 3)  
EX 203 1:200



03 Existing Site Section D-D (Part 2 of 3)  
EX 203 1:200



04 Existing Site Section D-D (Part 3 of 3)  
EX 203 1:200

ISSUED FOR PLANNING ONLY, NOT FOR CONSTRUCTION

NOTES:

- Do not scale from this drawing.
- Any discrepancies found on site to be reported to Darmody Architects immediately.
- Any discrepancies found on drawings to be reported to Darmody Architects immediately.
- Refer to engineers drawings for structural details.
- All dimensions sized to blockwork.

Rev.	Description.	Date.	Initials.
XREF'S			
CAD REF.			

DRAWING KEY		SCALE BAR		DRAWING KEY		NORTH POINT	
Delineates Site Boundary		0 10 20m SCALE BAR @ 1:200		[Drawing Key Symbols]		[North Arrow]	
		0 25 50m SCALE BAR @ 1:500					

creative innovative flexible

**darmody**  
architecture

91 Townsend Street, Dublin 2  
353 1 672 9907  
info@darmodyarchitecture.com  
darmodyarchitecture.com

Rev. No.	Scale	Date	Drn. By	Chkd. By	Issue
	1:500/1:200 @ A0	01/12/2021	Justin Lynch	Seán Barrett	PLANNING

Project Residential Development, Strategic Housing Development (SHD), at Mulladrillen & Rathgory, Ardee, Co.Louth	
Title.	Existing Site Section Section D-D
Client.	The Ardee Partnership
Dwg. No.	EX-203
Job No.	20011